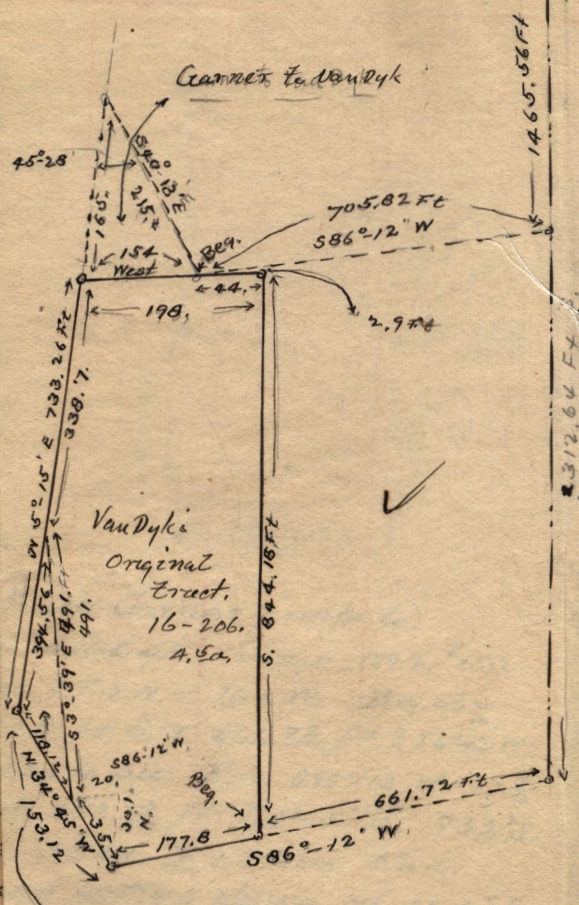


Oct 11-1893. self made out deed, as follows
 Rudolph Van Dyk to Fred Garner. Pt N.E. 1/4
 Sec. 9. T. 5. N. R. 1. W. Bcy. 2282.54 ft S. x
 859.52 ft S86°12' W. from N.E. cor. sec. 1/4 Sec.
 thence N34°45' W. 118.12 ft N5°15' E 394.45
 53°39' E 491. ft to bcy.
 Cut out of the West side of Van Dyk's A.

N.E. Cor. N.E. 1/4
 Sec. 9. T. 5. N.
 R. 1. W.



16-206. -
 Rudolph
 Pt N.E. 1/4 S.
 point 2312
 from N.E. Cor
 ft. N34°45'
 ft. E 198. Ft
 with right to us
 cor. of above tract

Van Dyk's
 Original
 Tract.
 16-206.
 A. Sec.

Van Dyk to Fred Garner

Sketch to exhibit
 deeds, made, say 30,

Oct 11-1893. self made
 Rudolph Van Dyk, to
 54 705.82 ft S86
 N5°15' E 165. ft to
 s. line str. to bcy.

which was on the N. end of
 Van Dyk's A.

2312.64 Ft
 2312.64 Ft